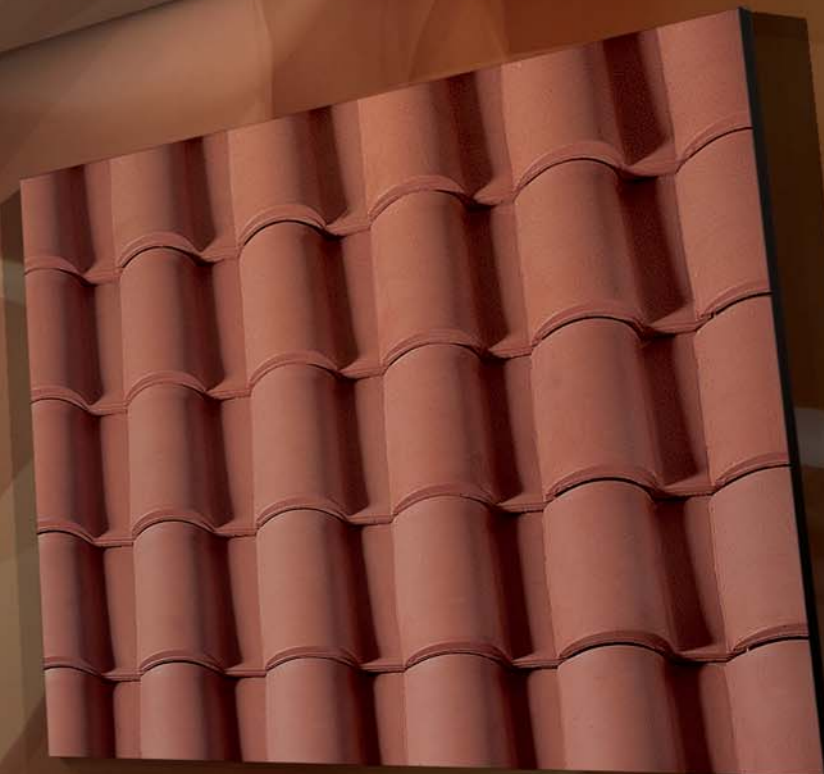


Te.Si.

ROOFING

Industrie
Cotto Possagno





A state of the art system dedicated to true connoisseurs.

Elegant. Research by the Industrie Cotto Possagno has created the evolution of the Portuguese tile: an innovative design, characterised by the accentuated wave of the curvature. Te.Si. brings a new and refined touch to every roof, satisfying the aesthetic requirements of the user.

Intelligent. Te.Si. perfectly unites elegance and functional efficiency: it takes only 12 tiles per square metre to install the entire roof with ease. Beautiful convenience and definite savings in time.

Safe. Te.Si. was conceived and designed without neglecting anything, the fitted borders that characterise this tile ensure greater water tightness. Additionally, the channels are larger to improve drainage.

Convenient. Te.Si. is supplied in packages with bands holding 5 pieces.

This solution permits greater ease in management of the product during installation.

Quick. Te.Si. can be installed in horizontal as well as vertical rows, with considerable savings in time and installation costs.



* 30 years of guarantee are provided on all finishing except the Te.Si. Light Natural Stoned finish.



Beauty and safety on the crest of the wave.

Te.Ma.X is a complete collection of accessories and finishing of various types, to be perfectly matched to any residential context: from the classical red, to the sophisticated light shade, through seven elegant antiqued shades. Te.Si. is produced with the rich clay of the Possagno area, which is ideal for the production of earthenware in all of its forms; thus, Te.Si., like all Industrie Cotto Possagno products, is transpiring, ecological and natural.

Te.Si.	
Length	~ 445 mm
Width	~ 268 mm
Weight	~ 3,8 kg
Pieces per sq m*	~ 12
Weight per sq m	~ 45,6 kg
Spacing	da ~ 370 a ~ 380 mm
Pieces per bed	100

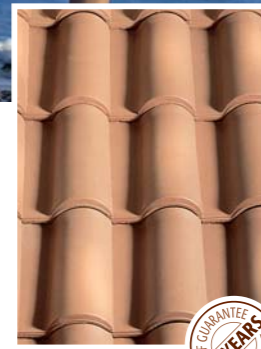
* Depending on the overlay.

TRADITIONAL LINE



Te.Si. Rossa

code **RZ01**



Te.Si. Chiara Stonalizzata Naturale

code **CZ01**

PLUS LINE



Te.Si. Ardesia

code **AW01**



Te.Si. Doppia Stella Alpina

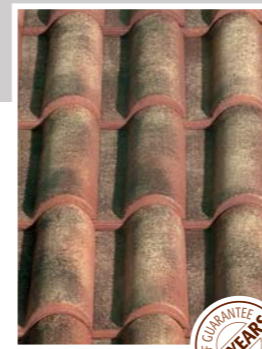
code **DZ01**

ANTIQUED LINE



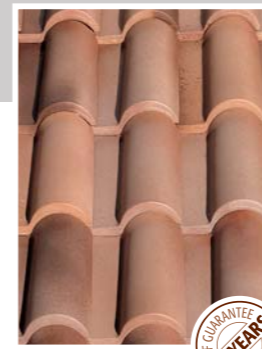
Te.Si. D'autore Rossa

code **AZ01**



Te.Si. Francia

code **FZ01**



Te.Si. Serenissima

code **SZ01**



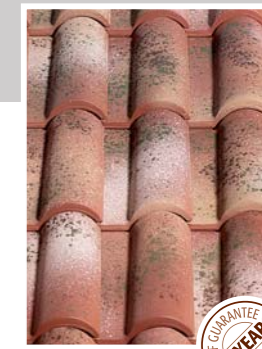
Te.Si. Vecchia Fornace

code **IZ01**



Te.Si. Veneto Antico

code **VZ01**



Te.Si. Antica Possagno

code **PZ01**



In the event of gradients between 30% and 35%, the use of a transpiring impermeabilizing sheath is required. The special processing of the antiqued Te.Si. makes every piece different, to improve reproduction of the shades and colours taken on with time by ancient roofs. In order to improve the chromatic yield of the roof covering, it is recommended to use products from several different beds simultaneously. Given the nature of the material, the colours of the catalogue samples are indicative. Weights and measurements may be subject to variations. See the relative card for installation of the product.

This product complies with UNI EN 1304 – 1024 – 538 – 539/1 – 539/2 norms and the successive updates and is covered by a guarantee, which is subordinate to respect of the UNI norms UNI 8178 – 8627 – 9308/1 – 9460 – 10740 and the successive updates. The fidelity of colour, shades and tones of the sample product chosen is the maximum level permitted by our current technology, with the exception of normal variations caused by the passage of time.



TRADITIONAL LINE

Te.Si. Rosso

The classical roof tile, revisited in a modern key to bring tradition into the future.

TRADITIONAL LINE

Te.Si. Chiara Stonalizzata Naturale

Attractive chromatic features that adapt to the most modern and dynamic taste.

PLUS LINE

Te.Si. Ardesia*

The colour of stone reveals the pleasure of the most audacious and modern stylistic choices.

PLUS LINE

Te.Si. Doppia Stella Alpina*

A product that reaches the summits of elegance, to resist at any altitude.

ANTIQUED LINE

Te.Si. D'autore Rossa

A masterpiece born to leave an indelible mark on the entire architectural landscape.

*The product may have some points of "non-uniformity" in colour, as a result of its technical and productive features.



ANTIQUED LINE

Te.Si. Francia

The homage due to a vast cultural patrimony, which is still capable of providing strong suggestions.



ANTIQUED LINE

Te.Si. Vecchia Fornace

A return to the origins, to valorise the material and rediscover the taste of familiar panoramas.



ANTIQUED LINE

Te.Si. Serenissima

Iridescent shades enliven cosmopolitan magnificence, wrapped in an atmospheric play without boundaries.



ANTIQUED LINE

Te.Si. Veneto Antico

In the heart of an artisan tradition that is still alive today, we discover new aesthetic horizons.



ANTIQUED LINE

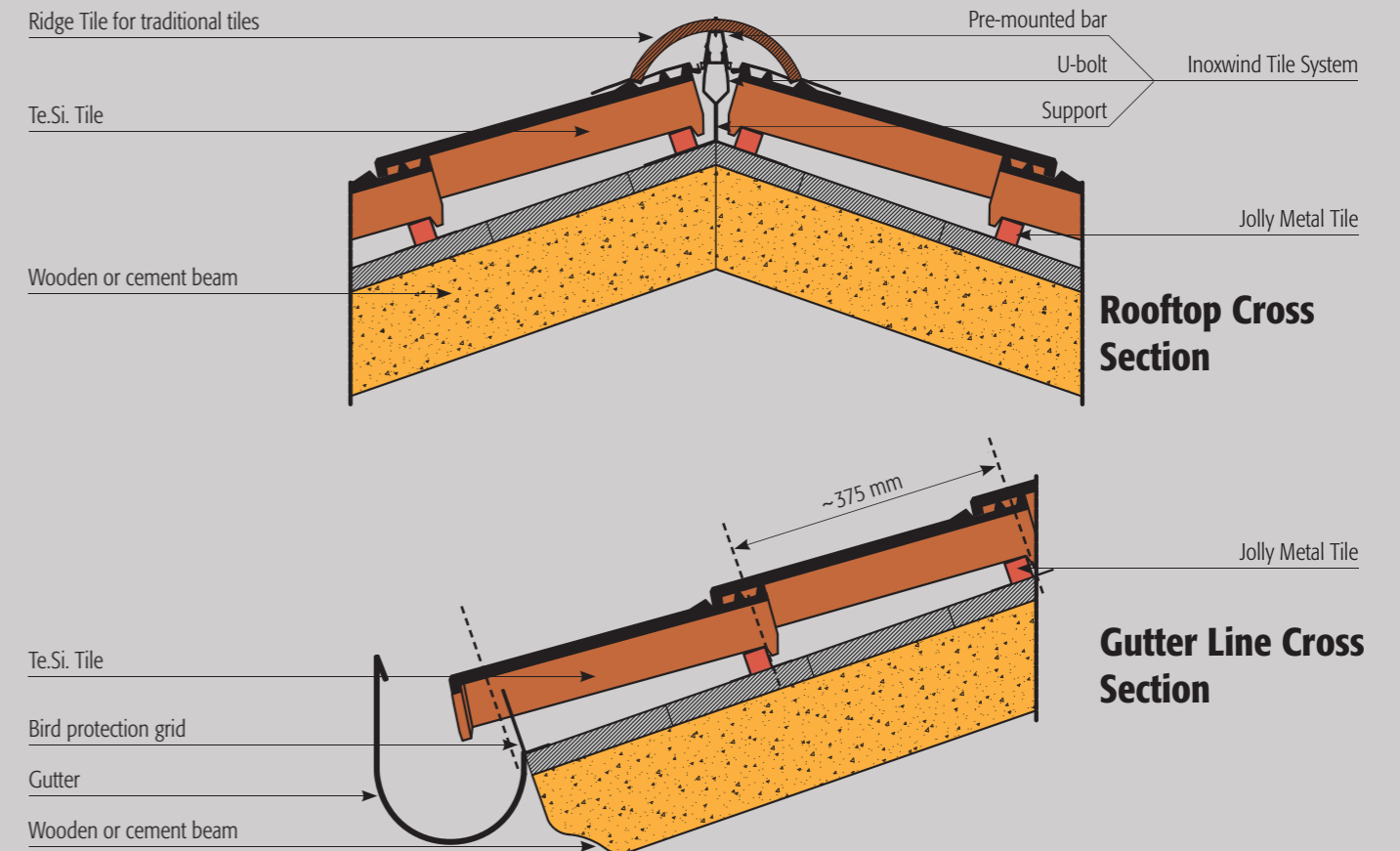
Te.Si. Antica Possagno

Dedicated to those who want to discover the timeless charm of living culture, every day.

Installation of Te.Si.

It is advisable to use splines to install the tiles quickly and ensure they are anchored well.

Jolly Metal Tile
Transparent sheaths for impermeabilization
Metallic bird guard grid



Thanks to their exceptional flexibility, Te.Si. Tiles can be laid both horizontally and vertically, with ease and the utmost speed.



Installation of Te.Si. adapts well to Industrie Cotto Possagno S.p.A. metallic aeration and ventilation splines (Jolly Metal Tiles).

Installation

The first column of tiles is supported with a spline that is perpendicular to the gutter line, measuring 30x40 mm if the tiles are supported on longitudinal splines and 40x40 mm if they are laid directly on the outer layer of the roof. The first row of tiles must also be supported with a spline 15 mm thicker than the successive transversal splines, or by the bird protection grid. In order to improve the chromatic yield of the roof covering, it is recommended to use products from several different beds simultaneously.

Items of specification

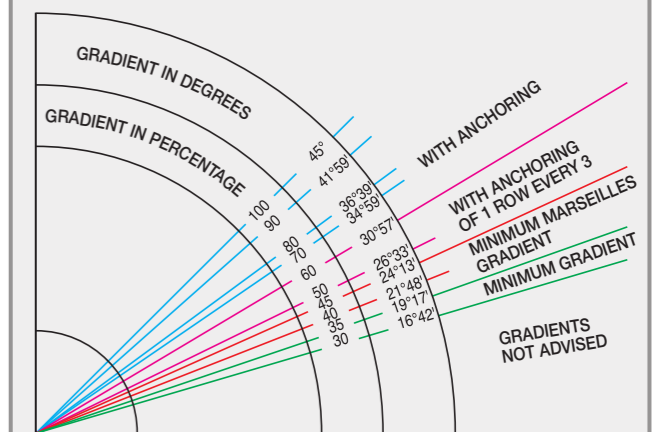
Supply of discontinuous roof covering in earthenware tiles, made up of moulded tiles having a length of ~445 mm, a weight of ~3,9 kg and with ~12 pieces per sq m including the relative special pieces, such as ridge tiles, end pieces, aerating pieces, etc., to complete the roofing. The tiles must be in conformity with norms in force and are provided with the relative Te.Si. Tile type guarantee of Industrie Cotto Possagno S.p.A.

Table of gradients for Te.Si.

Gradient	from 30% to 45% (with simple laying on splines)
Gradient advised	35%
Transversal spacing	~220 mm
Longitudinal spacing	~375 mm
Pieces necessary per m ² (Depending on the overlay)	~12 pieces

NOTE: In the event of gradients between 35%, the use of a transpiring impermeabilizing sheath is required.

Gradient table for brick tile roof coverings



Gradients to use and overlays are indicated in the table above. Concerning the strength of the wind, refer to the Ministry of Public Works circular that divides the national territory into climatic zones (Circular n. 22631 dated 24.05.82).

For GUARANTEES and CERTIFICATIONS, please refer to the General Catalogue.



Ridge Tile for Traditional Tiles

code --20



Traditional Double Headed Ridge Tile

code --23



Traditional End Piece

code --30



Traditional Two-Way

code --42



Traditional Three-Way

code --40



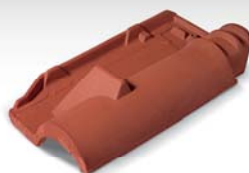
Traditional Four-Way

code --41



Te.Si. Aerator with Mesh

code --50



Te.Si. Snow Guard Tile

code --71



Right Lateral Tile

code --72



Left Lateral Tile

code --72



Te.Si. Complete Antenna Holder System

code --82



Te.Si. Complete Chimney System

code -- 62



Te.Si. Half-Tile

code --78



Minitec Straight Ridge Tile Support

code --84

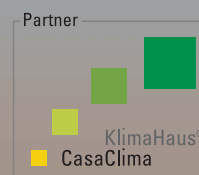


Minitec 45° Double Face Tile Left/Right Ridge Tile Support

code --85

This product complies with UNI EN 1304 – 1024 – 538 – 539/1 – 539/2 norms and the successive updates and is covered by a guarantee, which is subordinate to respect of the UNI norms UNI 8178 – 8627 – 9308/1 – 10740 and the successive updates. The fidelity of colour, shades and tones of the sample product chosen is the maximum level permitted by our current technology, with the exception of normal variations caused by the passage of time.

Industrie Cotto Possagno S.p.A. reserves the right to make modifications and variations to this catalogue at any time, with no advance notice. This catalogue supersedes and cancels all previous editions.



INDUSTRIE COTTO POSSAGNO S.p.A.

Via Molinetto, 80 - 31054 Possagno (TV) - Italy - info@cottopossagno.com - www.cottopossagno.com

Sales Office: Tel. +39 0423 920.777 - Fax +39 0423 920.707 - Ventilated Roof Division: Tel. +39 0423 920.701 - Fax +39 0423 920.703

Fiscal Code, VAT & TV Company Registry no. 03321030268 - Treviso Administrative Economic Listing no. 262004 - Fully Deposited Capital € 25,500,000.00